



**LIVE HERE
GIVE HERE**



2023 Annual Report

*Sage and Taniko at Omāhu Marae
Photo: Richard Brimer*



“I heard about the great work of Hawke’s Bay Foundation and once I saw their slogan “Live Here, Give Here” which really appealed to me, I was hooked.”

- Andrea Barry, HBF Donor

A Message From Our Chair

Kia ora koutou,

2023 was a year Hawke’s Bay Foundation will not forget.

You might recall we received a very significant donation of over \$3 million dollars from the proceeds of a property sale, which took our fund to \$10 million. We started 2023 looking to build on this.

Cyclone Gabrielle took all our plans, and those of many in Hawke’s Bay, in a different direction. We mobilised and within a few days of the cyclone set up a Cyclone Relief Fund to put our reach to good use and allow people in Hawke’s Bay and around the world to give. In the end we received over \$3 million in generous donations, and distributed these as quickly as we could to groups assisting with the clean-up, and then the recovery. We are proud of the efforts of our team in managing this process, and our Distribution Committee for the weekly and then fortnightly meetings needed to move at pace.

The work on the cyclone fund meant normal work in developing new donors took a back seat for much of the year, however we are grateful that our cyclone work was so well received, and more people became

aware of the work we do in the community. We’re already seeing the fruits of this in 2024.

The charities we support outside of the cyclone had a tough year with funding harder to come by and more demand for their services, so we’re pleased our distributions continue to grow, along with our fund.

The year also saw the retirement of two long-serving Trustees. I retired in November 2023, as did Sarah Mulcahy, we had both been with the Foundation for many years. The growth in the knowledge of Hawke’s Bay Foundation by the community was seen by the amazing response in our call for new trustees at the end of the year, which ended up with the appointment of Andrew Caseley, Leisa Epplert and George Lyons who will be great additions to the board and the appointment of Kevin Callinicos as Chair in my place. Our hardworking team contributed so much to what we achieved in 2023, especially with the management of the cyclone funds, even while Amy Bowkett, our own Executive Officer grappled with the loss of her own home in Puketapu.

This might well be seen as the year we grew up.



Giles Pearson
Chair

2023 In Review



Amy Bowkett
Executive Officer

Beginning a new year at your workplace can feel a bit like a new chapter. So many opportunities ahead, the potential to improve on the previous year, feeling rested from a summer break.

Dusting the sand from between our toes and farewelling the kids back to school, Van and I sat down together, all set to make 2023 our best so far. Then the 14th of February arrived along with Cyclone Gabrielle and pulled a big handbrake on our plans, both personally and professionally.

When looking back at the year I am extremely proud of how Hawke's Bay Foundation was able to focus on what we do best even in crisis, which is supporting our community, encouraging philanthropy and making big impact with small costs. Our Cyclone Relief Fund raised over \$3 million, with donations from all over the world funnelled straight back to Hawke's Bay. No fee was taken by our office, and hours worked overtime were considerable. We have immense pride in what we achieved. Thank you to all who had a hand in the Cyclone Relief Fund.

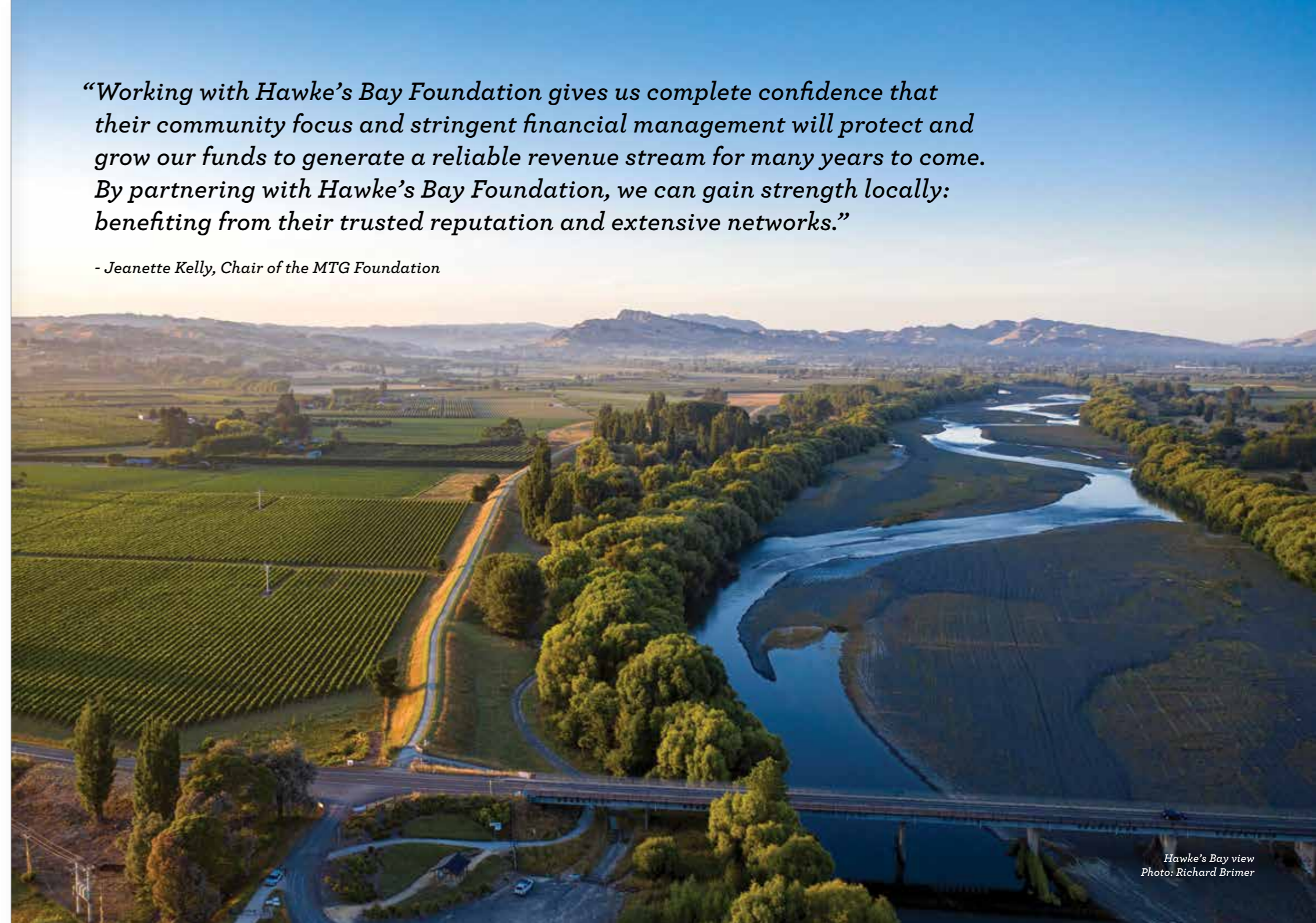
Another silver lining of the cyclone was a story close to my heart. My own cat Pearl was missing as we evacuated our home in Puketapu but was (spoiler alert) safely rescued. A wonderful children's book called 'Pearl in a Whirl', all about her adventures was written by Catherine Robertson, and illustrated by Fifi Colston. Proceeds went back to Hawke's Bay Foundation (and copies are at Wardini Books!) The launch was held in June at the newly refurbished Puketapu Hotel, also badly affected by the cyclone.

Later in the year the Foundation was lucky enough to receive its largest ever donation. Long-time donors to HBF, Vancouver-based Dick and Val Bradshaw decided to sell their home in the Tuki Tuki Valley and donate the proceeds to the Foundation. While they no longer have a home here, the Bradshaws will always have a presence here in the form of their Fund. We are so grateful for their generosity.

Ending the year having reached a big milestone of \$10 million funds under management was a lovely way to finish. The year was one of the most challenging but also most rewarding in my time at HBF and I am very grateful to our staff and board for their enthusiasm and support.

“Working with Hawke’s Bay Foundation gives us complete confidence that their community focus and stringent financial management will protect and grow our funds to generate a reliable revenue stream for many years to come. By partnering with Hawke’s Bay Foundation, we can gain strength locally: benefiting from their trusted reputation and extensive networks.”

- Jeanette Kelly, Chair of the MTG Foundation



*Hawke's Bay view
Photo: Richard Brimer*

Distributions

Hawke's Bay Foundation has been evolving its distribution approach over the first 10 years of operation. In a world where large-scale philanthropy often dominates headlines, the quiet yet profound impact of grassroots philanthropy can go unnoticed. Hawke's Bay Foundation's community-driven nature holds immense power in fostering positive change at the local level. From supporting small for-purpose organisations in addressing pressing social issues, to larger not-for-profits who need our support to continue to operate in our region, the philanthropy of Community Foundations offers a range of benefits that ripple through communities. Donors can see the tangible difference their contributions make in the lives of others, whether it's donating to a local food rescue, supporting a community garden, assisting marae or sponsoring education. The organisations we have supported in 2023 have increasingly limited resources, but with deep understanding of local needs, they are able to develop often innovative solutions that work in our Hawke's Bay context.

In 2023 through our annual distribution round, we distributed a total of \$190,042 to 51 organisations. We also made additional donor-directed (\$40,664) and pass-through distributions (\$287,821).

Unlike larger philanthropic organisations, Hawke's Bay Foundation is nimble and adaptable. We can quickly respond to emerging needs and in 2023

we were well tested through the Cyclone Relief Fund and the distributions made immediately in the aftermath of Cyclone Gabrielle. The generosity of our donors at this time remains a reminder of what we can achieve collectively, with focus and persistence. We distributed every dollar of the \$3,115,484 donated to the Cyclone Relief Fund diligently and with speed.

Our dedicated Distributions Committee gave generously of their time, skills and knowledge continuously throughout the year and for that we are truly grateful. Ehara koe i a ia! (Thank heavens, we were lucky to have you!)

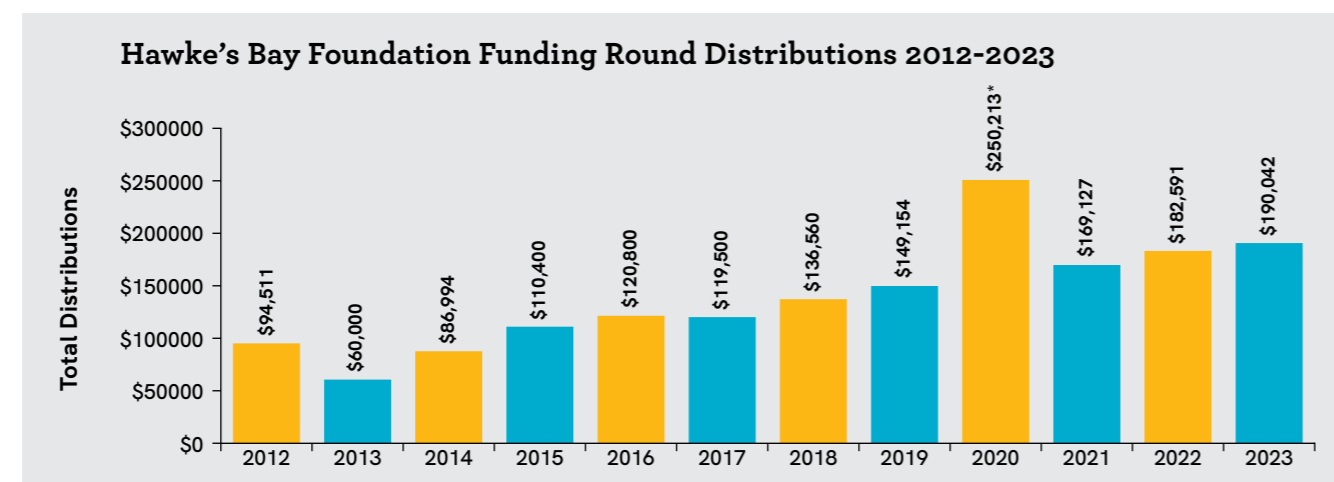
In 2024, as I retire from Hawke's Bay Foundation, Craig Hay will be leading the Distributions Committee. It's been an incredible privilege to

have served our community over the last few years and I know that Hawke's Bay Foundation will continue to go from strength to strength.

Hawke's Bay Foundation's style of philanthropy fosters the cultivation of social capital, which builds relationships, and trust within our community. In Hawke's Bay our social capital as a region is becoming increasingly important if we are to build more resilient communities where we can all thrive.

By supporting Hawke's Bay Foundation, we can all make a meaningful difference in the lives of others and contribute to the well-being of our communities for future generations.

Sarah Mulcahy
Chair, Distributions Committee



This graph only discloses our annual HBF distributions and excludes any donor directed or pass-through distributions.

**2020 figures include distributions made from the Emergency Response Fund set up for Covid support*

2023 Annual Funding Recipients

Connecting generous people that care with causes that matter

HAWKE'S BAY FOUNDATION & TINDALL FOUNDATION GRANTS	GRANT (NZD)
Age Concern Hawke's Bay Inc.	\$6,000
Anxiety NZ Trust	\$4,700
Arts Inc. Heretaunga (Incorporated)	\$3,000
Aubyn Live Theatre	\$1,000
Awhi Charitable Trust ^T	\$6,000
Bellyful New Zealand Trust	\$3,000
Big Brothers Big Sisters of Hawke's Bay	\$5,000
Birchleigh Polo School Programme	\$3,000
Birthright HB Child and Family Care Trust ^T	\$6,000
Brain Injury Association	\$4,000
Cancer Society of NZ Hawke's Bay Centre Inc.	\$5,000
Central Connect ^T	\$4,092
Central Hawke's Bay Parenting Support Services ^T	\$3,000
Central Hawke's Bay Parents Centre ^T	\$3,000
CHB William Pike Challenge Trust	\$2,000
Christian Lovelink Napier Hastings inc.	\$4,000
Citizens Advice Bureau Napier Inc	\$1,121
CONNECT Youth & Community Trust	\$2,000
Cranford Hospice Trust	\$5,000
Creative Arts Napier-Nga Ringatoi Auaha O Ahuriri	\$2,000
Cycling Without Age Napier Trust	\$2,000
English language Partners New Zealand Trust	\$1,500
Environmental Educ for Resource Sustainability	\$2,000
Epic Ministries inc	\$4,500
Family VIP ^T	\$5,000
Family Works Hawke's Bay (FWHB) - PSEC	\$5,629
Graeme Dingle Foundation Hawke's Bay ^T	\$4,000

HAWKE'S BAY FOUNDATION & TINDALL FOUNDATION GRANTS	GRANT (NZD)
Hands Up Community Services Trust ^T	\$4,000
Hastings Group RDA	\$4,000
Hawkes Bay Youth Trust (Giants Boxing)	\$5,000
Hayseed Trust	\$3,000
Heretaunga Women's Centre ^T	\$5,000
Inspire in Education ^T	\$5,000
Kidnnections Charitable Trust ^T	\$5,000
Ko Wai Tōu Ingoa Hauora Charitable Trust ^T	\$5,000
Lifelink/Samaritans Incorporated	\$2,000
Maca Sports Leadership Charitable Trust	\$3,000
Mates of Hawke's Bay Charitable Trust	\$3,000
Napier Family Centre Inc ^T	\$6,000
Napier Group RDA Association	\$4,000
Nourished for Nil Ltd.	\$4,500
Parent to Parent Hawkes Bay	\$3,000
Peoples Advocacy Society	\$3,000
Pregnancy Help Hastings and Napier ^T	\$3,000
Prima Volta Charitable Trust	\$4,000
Re-Source	\$5,000
Sustaining Hawke's Bay Trust / Environ Centre	\$2,500
Te Mata Park Trust	\$500
The Food Basket Central Hawkes Bay	\$3,000
The Paul Hunter Centre	\$5,000
Thermals for Children	\$2,000
Wharariki (Flax) Trust	\$3,000
TOTAL FUNDS DISTRIBUTED	\$190,042

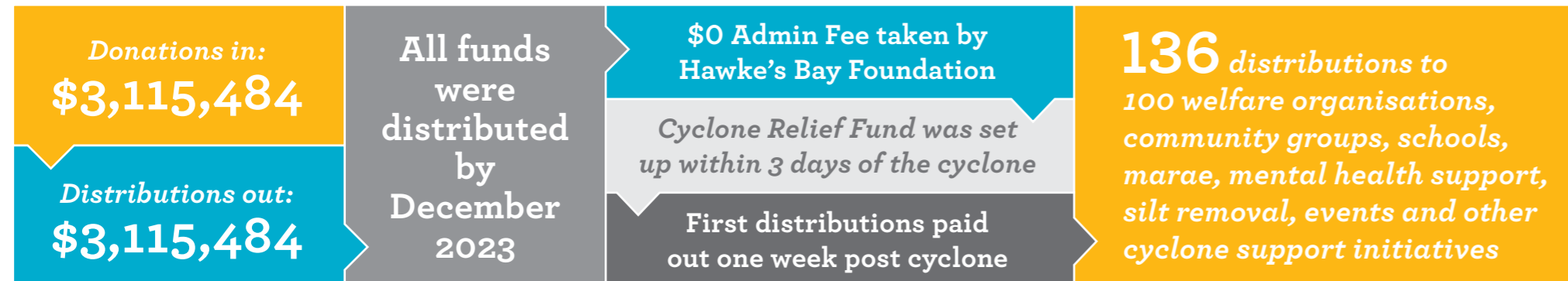
^T denotes distributions made from The Tindall Foundation

Cyclone Relief Fund

The widespread devastation and heartache caused by Cyclone Gabrielle left the region of Hawke's Bay - its communities and residents - completely ravaged, with many struggling to rebuild. To help support the region's unprecedented relief effort, Hawke's Bay Foundation set up a special Cyclone Relief Fund to funnel donations direct to overwhelmed welfare agencies on the ground. Within one week of donations streaming in, Hawke's Bay Foundation's specialist Distributions Committee approved and distributed the first round of funds to frontline charities on a 'greatest needs' basis.

A full breakdown of all distributions from the Cyclone Relief Fund can be found on our website www.hawkesbayfoundation.org.nz

We are truly grateful for the incredible generosity and support for our region.



Statement of Performance

Hawke's Bay Foundation's endowment fund has grown significantly in the financial year ended 31 December 2023. The growth was achieved primarily because of generous donations received, aided by a gain of 6.20% (\$488,300) on the Foundation's investment portfolio. Distributions (excluding Cyclone Relief Fund) of \$518,527 were made during 2023.

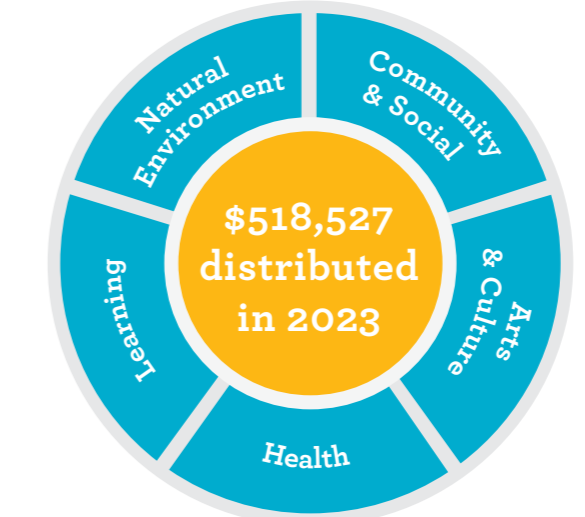
Following the Foundation's first ever negative investment return in 2022, it was very pleasing to record investment earnings of 6.20% on the Foundation's endowment fund in 2023. Investment markets were subdued in the first half of the year but performed strongly, particularly in the last quarter of 2023. Achieving an average annual return on investments of 6.99% over the last five

years demonstrates the stability and growth of the endowment fund, which enables the Foundation to give back to the community every year.

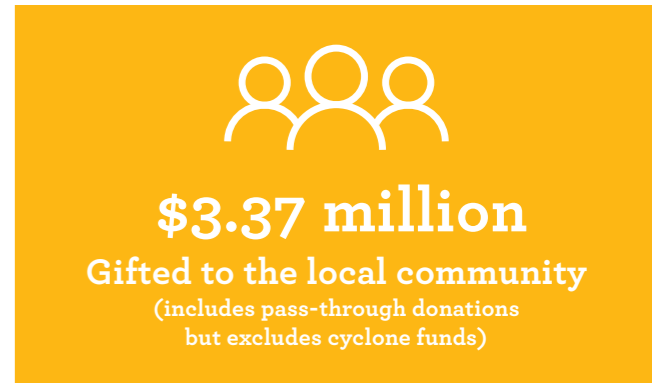
With the endowment fund passing the milestone \$10 million value later in 2023, the trustees determined that it was timely to review the provision of the investment services for the Foundation. Four investment firms were invited to submit a proposal to provide those services, and Craigs Investment Partners were selected to manage the portfolio for the next stage of its development. These changes took place in March 2024. The trustees thank Jarden for a decade of unwavering support and excellent service. Jarden have been a critical partner assisting us to develop to the strong Community Foundation that we are today.

HAWKE'S BAY FOUNDATION	2023
Net assets - 1 January 2023	\$6,419,301
Donations received*	\$4,094,017
HBF annual distributions	\$190,042
Pass through distributions**	\$287,821
Donor directed distributions	\$40,664
Return on investments	6.20%
Net assets - 31 December 2023	\$10,375,817

*Includes pass-through donations but excludes Cyclone Relief Funds.
 **Pass-through distributions are donations made directly to organisations on behalf of a donor (not invested).
 Hawke's Bay Foundation uses 1% of the endowment fund for operational costs with the balance of operations funding derived from donations and sponsorship. All funds were invested in compliance with our SIPO which can be viewed on the Foundation's website.



Look how far we've come since 2012



Live Here, Give Here



GIVE HERE

Historic House Sale Produces Record Gift for Hawke's Bay Foundation

The sale price of an iconic Hawke's Bay River Lodge property far exceeded expectations and now underpins what is the largest gift ever made to Hawke's Bay Foundation by a single donor.

Whilst the purchase price of Val and Dick Bradshaw's Tuki Tuki holiday home remains confidential, Tremains Real Estate (who facilitated the sale) has revealed that the property sold for more than \$3M.

The generous gifting of the Canadian couple's sale proceeds to Hawke's Bay Foundation attracted national media interest when tenders opened for the property.

In an historic move, Tremain Real Estate waived all fees and commissions on the sale and Managing Director Simon Tremain says he feels extremely honoured to have been part of the process.

"We are ecstatic to confirm the sale of 1308F Tuki Tuki Road. Tremains has a long standing connection to Hawke's Bay and to supporting the Hawke's Bay community, and it's been a privilege to align with this historic sale process. We're really proud of our sales consultants Susie Sturt and Jarrod Lowe who worked tirelessly on this campaign and have walked away from the sale waiving their commission for the greater good."

Simon believes public interest in the tender served the Bradshaws well.

"I think once the buyer understood that the bid they were putting in is effectively going to an organisation as worthy and robust as Hawke's Bay Foundation, they had to feel pretty good about that."

Hearing the news, Val and Dick Bradshaw are both 'over the moon'.

"We are so grateful to Susie and Jarrod for shepherding us through this process so professionally and are absolutely delighted with the end result."

Canadian-based Val and Dick Bradshaw visited Hawke's Bay for several months each year and were drawn to the region and the property for its beauty, fishing and easy access to the outdoors. Over the past 20 years they made enduring Kiwi friendships and quietly contributed to the Hawke's Bay community in many ways.

Close friend and Hawke's Bay Foundation Trustee Jules Nowell-Usticke says the couple know the importance of legacy gifting to their community.

"Being closely connected with the Vancouver Foundation with Dick as former Deputy Chair, they understand the incredible impact that Community Foundations can have on communities."

"By generously leaving this gift to Hawke's Bay Foundation, they know it will hugely benefit many of our own charities for years to come."

The Bradshaws have left it up to the discretion of Hawke's Bay Foundation to assess where their gift will be best distributed.

Hawke's Bay Foundation Executive Officer Amy Bowkett is proud to act as caretaker of their legacy.

"Their donation will be protected in perpetuity with our Distributions Committee directing the earnings generated each year to the areas of greatest need in Hawke's Bay. We're definitely going to miss having Dick and Val visit but it's so heart-warming knowing that their memory will live on through their generosity towards this community which they loved dearly"

"Theirs is truly 'a gift that keeps on giving' and their legacy will make a profound difference to many lives in Hawke's Bay for generations to come." ♡

LIVE HERE

'Pearl in a Whirl' Boosts Cyclone Recovery

Book sales of 'Pearl in a Whirl' – Cyclone Gabrielle's heart tugging tale of one fluffy cat amid the wreck and ruin has captured the nation and continues to raise funds for Hawke's Bay's recovery efforts.

Written by bestselling author Catherine Robertson, illustrated by Fifi Colston and published by Penguin, the book officially launched in June 2023 ahead of its release in all good book stores around New Zealand.

Since hitting bookshelves, Pearl has consistently sat in New Zealand's Top 10 Bestseller's List with every copy sold helping boost Hawke's Bay Foundation's Cyclone Relief efforts.

It's success has popular children's book illustrator Fifi Colston beaming with pride.

"I've illustrated over 50 books in my career as a book illustrator and this is my favourite. I'm so proud of what we've pulled together and what I was able to extract from myself as an illustrator and the team behind it. The book is doing so well and it's giving back which is so fantastic."

The book's official launch back in Pearl's old neighbourhood at the Puketapu Pub was a chance for locals to get together and celebrate one of the silver linings from the cyclone.

For community spokeswoman Ange Mackie it was an emotional reunion.

"Pearl in a Whirl is a nice keepsake of the cyclone and what everyone went through and the bravery of those people caught up in it. It's lovely to see this book come to fruition given the trauma that Amy and her family have been through losing their home and way of life."

As for Pearl, she now calls Napier's Bluff Hill home and according to owner, Hawke's Bay Foundation Executive Officer, Amy Bowkett, she's adapted well to town life.

Author Catherine Robertson is certainly standing by for the next installment.

"I reckon Pearl's got a lot of adventures in her and we do have options for a sequel, who knows, hopefully not a flood story or a tsunami or earthquake... something less traumatic. I have faith that there'll be more adventures to come!" ♡



Live Here, Give Here

GIVE HERE

Funding Links Stronger Post Cyclone

Over one year on from Cyclone Gabrielle and community funding leaders have had time to positively reflect on the critical collaborations the crisis helped strengthen.

United in Gabrielle's aftermath, Hawke's Bay as a community has rallied together and so too have the region's community funders.

Disseminating funding swiftly to where it was needed most has been an ongoing collective effort, bolstered by funding organisations working more effectively together.

Hawke's Bay Foundation responded alongside organisations the likes of Evergreen Foundation, Eastern and Central Community Trust (ECCT) and the Rural Support Trust ensuring efficient passage of donor funds.

Hawke's Bay Foundation played a critical role, generating and distributing public donations itself of over \$3M for cyclone relief and recovery. Distributions Officer Vanessa Bousfield says it's been heartening to observe the teamwork.

"The cyclone taught us the power of the collective and by our charitable organisations joining forces

we have all seen what can be better achieved. That can only serve us well for the future."

ECCT's Nadia Hardie agrees.

"All too often funders work in silos. By working collectively through an already established channel of the HB Funders Forum, the funders and other government agencies were able to quickly provide essential support (relief funding in the first instance, and recovery funds later on), by sharing information, visiting affected communities together, listening and then figuring out ways of collectively funding the need.

"Forum meetings continue once per month with funders and agency departments along with District Councils still working together collectively and there is hope that this collaboration, which better serves our communities, continues going forward and not just during times of crisis."

East Coast Rural Support Trust has been providing support to rural schools, fencing materials, speakers such as Dr Lucy Hone and Lance Burdett, community gatherings, and individual counselling along with other initiatives.

Area Coordinator Jonathan Bell says linking in with other funders like Hawke's Bay Foundation enabled funds to go further and resulted in greater reach to our rural communities.

"Collaborating ensured that the voices of the



Cyclone volunteer appreciation day in Hastings.

communities were listened to, we were able to discuss and tailor responses depending on each organisation's funding criteria which enabled a flexible and speedy response to our communities.

"We have people reaching out to us even now for help over twelve months post cyclone. We expect the "tail" to last several years. Farms and orchards

"The cyclone taught us the power of the collective and by our charitable organisations joining forces we have all seen what can be better achieved. That can only serve us well for the future."

may take up to ten years to return to what they were pre cyclone, and the financial costs will take some time to recover, perhaps up to fifteen years."

Evergreen Foundation has been instrumental in helping Hawke's Bay's hard-hit horticultural and agricultural producers get back on their feet with various projects such as Hort Support Days,

fencing support and community events. Their 'Bin Clean Up' saw just under 30,000 scattered and silt filled bins collected, cleaned, repaired and delivered back to growers, saving an estimated \$3 million of costs to replace.

Trustee Brendan O'Sullivan says partnering with Hawke's Bay Foundation has been extremely valuable.

"As a donation-based charitable organisation we are always looking to make each dollar work as hard as possible. The opportunity to collaborate with Hawke's Bay Foundation has meant that we have been able to add so much more to the community than what we could have done by ourselves.

"During a wide-spread crises often larger organisations simply do not have the capacity and agility to cover everything. Having charitable organisations in our region that have strong links to the community like the Hawke's Bay Foundation, we have managed to create a very responsive nimble effort to help fill gaps. If something happened in the future we have a much clearer role and network to help.

"We can all reflect on what can be done better but I hope it's reassuring for our communities and region to know that there is a very effective group of on the ground organisations who have established strong working relationships to deliver a lot more than what we could have done separately." ♦

Live Here, Give Here

LIVE HERE

Hawke's Bay Funding Duo Join Forces

A recently forged partnership between Eastern Central Community Trust (ECCT) and Hawke's Bay Foundation is set to enhance the impact of philanthropic funding in the region, now and into the future.

Two of the region's major charity funders have entered an alliance, agreeing to share resources, knowledge and on the ground community connections, to sustainably grow Hawke's Bay's funding capacity.

For Hawke's Bay Foundation Executive Officer, Amy Bowkett the commitment means greater equity, better health and well-being, and stronger more resilient communities.

"Collaboration between funders is imperative if we are to accelerate transformational community change. This shared vision by ECCT and Hawke's Bay Foundation ensures there is both short-term and long-term funding available for Hawke's Bay."

In return for operational funding assistance of \$50 thousand per year from ECCT over the next three years, Hawke's Bay Foundation will provide on the ground support in Wairoa and share expert sector knowledge.

Amy Bowkett adds "operational funding is critically important to Hawke's Bay Foundation until we can become self-sustaining but it will take us some time to get there. We are extremely grateful to ECCT for believing in our model, and their support shows the value we (as a community foundation) can add."



ECCT CEO David Clapperton and Hawke's Bay Foundation Executive Officer Amy Bowkett attend a Hawke's Bay funders forum.

ECCT Chief Executive David Clapperton says his organisation's strategic plan through to 2030 is to sustainably grow Hawke's Bay's funding capacity. He sees Hawke's Bay Foundation's unique growth-based endowment funding model as an effective means to help achieve that.

"Right now, the philanthropic funding capacity in Hawkes Bay is between \$5 million to \$7 million per annum. ECCT would like to see that amount double in the next ten years and by supporting Hawke's Bay Foundation, we see that target becoming more achievable.

"By Hawke's Bay Foundation growing their investment base and becoming self sustainable, they can distribute significant levels of funding from investment returns to community groups in the Bay. From our perspective, the greater the overall pool of philanthropic funding for Hawke's Bay, the greater the impact of transformational change."

David Clapperton believes in better outcomes through working together.

"The philanthropic sector is not a competitive environment. Why shouldn't we share resources, our knowledge, our connections, and our systems to allow a greater focus on those organisations on the ground supporting the delivery of services to our communities.

"I strongly believe that collaboration amongst funders, both government and philanthropic, is the only way we will see transformational change in the communities we serve. Funders working in silos is untenable and unsustainable. Funders have similar objectives around improving the wellbeing of communities so why not work together to achieve better outcomes?" ♦

GIVE HERE

Hawke's Bay Couple's Bequest 'Par for the Cause'

Pursuing their own passions in life has motivated an adopted Hawke's Bay couple to leave gifts in their will to help others follow theirs.

Avid historian Dr Michelle Smith and former amateur golfing representative Blair Smith describe themselves as "hardworking, pretty ordinary New Zealanders" with a strong desire once they're gone, to provide financial opportunities for others.

A recent visit to update their will with their lawyer before going on holiday prompted the pair to approach Hawke's Bay Foundation to put their charitable giving into action.

"Blair always had an idea that he wanted to support Hastings Golf Club (where he is an active member), along with a few other smaller bequests between us: namely the SPCA, Women's Refuge and muscular dystrophy research. We wanted to give something back to the local causes and charities that are important to us and our lawyer suggested we get in touch with Hawke's Bay Foundation, so we did."

"We don't have any children and thought how can we put the money we've made in our lifetime to good use without burdening executors with the ongoing responsibilities of managing it. Hawke's

Bay Foundation are experts in this field, they're built to last, have deep community roots and know where the needs are greatest.

"We like the endowment model where the money can build up, and we can gift from the income, maintaining the body of the fund and allowing us to leave a lasting legacy."

Michelle admits she was a 'late bloomer' when he it came to finding her passion. Born with muscular dystrophy has brought with it multiple challenges, including several falls, a couple of major operations and reliance on a wheelchair, but as Michelle asserts she never let it stop or define her. In 2010 Michelle finished her PHD and entered the museum sector where she worked as historian and curator of Papakura Museum for eight years.

After moving to Hawke's Bay five years ago seeking a lifestyle change and better work life balance, Michelle and Blair settled in Havelock North. The five minute commute to work for Blair as Village Manager at Summerset Retirement Village is a far cry from the two hour daily commute he used to endure. Soon after moving here, Michelle was approached by a local farm owner to document Kahuranaki Station's history. Several private projects later, Michelle felt compelled to set up a grant for other budding historians to assist with the costs of seeing a project through to fruition. She plans to leave a percentage of her estate to Hawke's Bay Foundation to facilitate her wishes.

"Blair and I hope with the little bit we leave behind that we can remove financial barriers allowing people to follow their dreams like we've been able to. We hope it's enough to make a difference."

Blair feels fulfilled that a percentage of his estate will support 1-2 budding local golfers per year in perpetuity, with the costs of coaching, equipment, travel and entry fees through Hastings Golf Club.

"Golf has been a big part of my life and I always knew that I wanted to put something back into the game when the time comes to benefit junior golfers coming through. It's an expensive sport so if I can provide some support and opportunity to kids out there with talent who are more in need of a hand up, then I'm happy."

"We've been very fortunate in our lives and through hard work we are able to give back in this way. It feels great. It's easy to leave your money to family but it's a different world than it used to be in terms of reliance on inheritances.

"We're not philanthropists, we just want to make things a little easier for a handful of groups that are important to us, be it animals or people."

With Michelle reliant on service dog Skye, a gift to the SPCA leaves her content she's giving back.

"Whatever is left at the end we know it's going to be put to good purpose and many people (and animals) will benefit." ♦

A sunrise on Napier's Marine Parade
Photo: Warren Buckland, Hawke's Bay Today



“Unlike larger philanthropic organisations, Hawke’s Bay Foundation is nimble and adaptable. We can quickly respond to emerging needs and in 2023 we were well tested through the Cyclone Relief Fund and the distributions made immediately in the aftermath of Cyclone Gabrielle. The generosity of our donors at this time remains a reminder of what we can achieve collectively, with focus and persistence.”

- Sarah Mulcahy, Trustee & Chair of Distributions Committee

Partners & Supporters

As a Community Foundation we strive to keep our costs as low as possible to ensure 99% of the income from gifted funds is invested back into our community. We are incredibly grateful to the following organisations who have supported us to keep our operating and marketing costs to a minimum. We also want to thank all the individuals who have given their time or expertise to assist with one-off events or promotions.

Hawke's Bay Foundation is proudly supported by:



Community Foundations of Aotearoa NZ (CFANZ)

Hawke’s Bay Foundation is proud to be a member of Community Foundations of Aotearoa NZ (CFANZ). Membership of CFANZ means that our community foundation meets professional standards of best practice. We are community focussed and governed by a local board who continually strive to build a permanent endowment that will benefit our local community. We’re proud to be part of a network of community foundations that have been growing around Aotearoa New Zealand since 2003.

The Tindall Foundation (TTF)

Hawke’s Bay Foundation is proud to be the local funding manager for The Tindall Foundation (TTF). This unique funding model sees regional funding managers throughout New Zealand give out local donations on behalf of TTF. Applications received in our annual funding round are evaluated against TTF criteria and we work closely with them to ensure grants are awarded in line with their key programme areas. In 2022, we awarded grants totalling \$64,000 to 15 organisations on behalf of the Tindall Foundation.

Eastern and Central Community Trust (ECCT)

Eastern and Central Community Trust work in partnership with Hawke’s Bay Foundation to support Hawke’s Bay’s community needs. By collaborating and sharing sector knowledge, we are making better funding decisions for our local charities and community groups.

Our Team

Board of Trustees

Hawke's Bay Foundation's board consists of a group of trustees, all of whom bring a great deal of knowledge and experience from various sectors of the community.

Our trustees are nominated by leaders in the Hawke's Bay community, including one nominated jointly by the mayors of Hastings and Napier; one by the Hawke's Bay Law Society; one by Chartered Accountants Australia and New Zealand and another by the Hawke's Bay Chamber of Commerce. We had 3 new board members join us in November 2023 when we farewelled two of our long-standing board members Giles Pearson and Sarah Mulcahy at the same time.



Giles Pearson
(Chair to Nov 2023)



Kevin Callinicos
(Chair from Nov 2023)



James Wright



Sarah Mulcahy
(Trustee to Nov 2023)



Kara Biggs



Jules Nowell-Usticke



Craig Hay



Cam McLeay



Kate Tokeley



Andrew Caseley
(from Nov 2023)



Leisa Epplert
(from Nov 2023)



George Lyons
(from Nov 2023)

Committees

Finance, Risk & Audit Committee

- Giles Pearson (Committee Chair)
- Cam McLeay
- Bev Penny
- Kate Tokeley
- Nigel Dawes
- Andrew Caseley

Investment Committee

- James Wright (Committee Chair)
- Henry Pennington (Community Representative)
- Neil Martin (Community Representative)
- Michael Chamberlain (Consultant)
- Giles Pearson
- Andrew Caseley

Distributions Committee

- Sarah Mulcahy (Committee Chair)
- Jules Nowell-Usticke
- Craig Hay
- Kevin Callinicos
- George Lyons
- Kathryn Young (Community Representative)
- Gwyn John (Community Representative)
- Trish Giddens (Community Representative)
- Satyam Saha (Community Representative)

Communications & Engagement Committee

- Kara Biggs (Committee Chair)
- Jules Nowell-Usticke
- Craig Hay
- Cam McLeay
- Leisa Epplert
- Andrew Caseley

Executive Team

- Amy Bowkett (Executive Officer)
- Vanessa Bousfield (Administration and Distributions Officer)
- Bev Penny (Finance Officer)
- Alisha Neilson (Marketing and Communications Officer)



Our community.

Our responsibility.

Our future.



HAWKE'S BAY
FOUNDATION

(06) 870 4648

info@hawkesbayfoundation.org.nz

www.hawkesbayfoundation.org.nz

[facebook.com/HawkesBayFoundation](https://www.facebook.com/HawkesBayFoundation)

[instagram.com/hawkesbayfoundation](https://www.instagram.com/hawkesbayfoundation)

nz.linkedin.com/company/hawke-s-bay-foundation