

**LIVE HERE  
GIVE HERE**



**HAWKE'S BAY  
FOUNDATION**

A Birthright Hawke's Bay Holiday Programme attendee modelling the latest in sun protection at Spriggs Park in Napier. – Image courtesy of Birthright CEO Andy Pilbrow

**2021 Annual Report**

“Unlike other charitable giving, a one-off donation made through Hawke’s Bay Foundation grows and keeps on giving, forever.”

- Amy Bowkett, Executive Officer



Hawke’s Bay Foundation helps Prima Volta students and graduates find their voices, fostering confidence, ambition and self belief through music. Here they perform with orchestra at Irongate School in Flaxmere. Every dollar invested in the PPV programme returns \$2.45 of social good to the Hawke’s Bay community. - Photograph by Michael Schultz

## A Message From Our Chair



**Giles Pearson**  
Chair

### **Kia ora koutou,**

2021 was a year many will want to forget, but for us at Hawke's Bay Foundation it marks 10 years in existence and we think it saw us mature as Hawke's Bay's Community Foundation.

Organisations often change dramatically over their first 10 years, and in many ways that is our story too. From a small group of enthusiasts getting ten donors to gift \$100,000 each in 2012, the Foundation went through the usual growing pains of having to convince the community that we are here forever and can steward their giving for future generations. That's a hard story to sell, so donors sit back a bit and wait to see if it's all true.

Circle forward 10 years and we're starting to reap the rewards of that vision in 2012. Along with the amazingly generous donation of \$1.3M from the AFB Lusk Club Home Trust to set up the Sally Lusk Fund with Hawke's Bay Foundation, we've seen a steady stream of both cash donations from individual and community groups, along with many advising us of bequests they have made. Growing the fund in one year from \$4M to \$6.1M along with a number of sizable donations already in 2022, puts the Foundation well on track to fulfilling the goal we set

ourselves – to help those who live here in Hawke's Bay, to give here in Hawke's Bay.

I've mentioned the Sally Lusk Fund but it's worth mentioning the launch of the Karamu High School Fund set up by an anonymous former student to provide financial support in perpetuity for Karamu High School and its students. Publicity over this initial \$100,000 gift prompted another former teaching couple to make an equivalent donation. This proves the power of the Foundation to connect and provide a vehicle for those who want to give.

It was a challenging year for events, but we were very lucky that the team organising The Night Of Us was able to hold a magnificent event in March 2021 for the benefit of the Hawke's Bay Foundation. It was a fabulous evening of entertainment and stories of philanthropy to inspire guests. A considerable gift was made to Hawke's Bay Foundation from the event organisers, but more importantly the message of caring for our community was absorbed by the guests, some of whom have already come forward to support Hawke's Bay Foundation.

As always our operations team have done the heavy lifting – many thanks to Amy Bowkett, Alison Harper and Alisha Neilson for their dedication to the Foundation above and beyond what we engage them to do for us. Our trustees and sub committee members also work hard in their volunteer roles, and their enthusiasm and passion for the Foundation is allowing us to create stronger impact in the community.

## 2021 In Review



**Amy Bowkett**  
Executive Officer

### **March: The Night Of Us Community Fundraising Event**

March kicked off most spectacularly with the Night of Us, an event held at Toi Toi in Hastings to raise the profile of Hawke's Bay Foundation, and to raise funds via a combined wine & art auction. The night was a great success and thanks must go to all involved, from the committee organisers to the wineries and artists who donated their time and skills.

### **April: New Office Space and Community Support**

The local business community really got behind us this year. We now have a new office in Hastings' most exciting new development - the Tribune Precinct. Thank you to Hansen Property Group for this opportunity. Stephanie and Tim Murphy from Bay European also very generously donated Hawke's Bay Foundation a sign-written car to use as a moving billboard. We are incredibly grateful for these opportunities. Thank you also to Mike Glazebrook

at BioRich and Luke Irving of Fingermark for their ongoing corporate sponsorship which supports our operating costs.

*If you are interested in becoming a Corporate Sponsor of Hawke's Bay Foundation, please contact Amy on 870 4648.*

### **August: Karamu High School Fund**

A fund we were very proud to facilitate this year was for Karamu High School. An ex-student had been donating annually to the school. But wishing to make a more permanent gift, they made a sizeable donation to launch the new Karamu Fund. An ex-staff member was so inspired she ended up matching the donation, meaning Karamu High School now has a significant asset that will continue to grow as other alumni also donate.

### **August: Walk Of Wonders**

We were very proud to be selected by the team at Vesica to be one of the chosen charity partners alongside Whatever It Takes, for the spectacular light art, fire and audio show Walk of Wonders. Held across 10 nights in August, the local crowds were thrilled to be able to get out and about after many months

of Covid-related cancellations, and we raised a very healthy amount to support charities working within Hawkes Bay's mental health space.

### **November:**

#### **Outward Bound Fund for Hawke's Bay**

In November we held an event in Napier alongside the team from Outward Bound. Hawke's Bay Foundation donors heard about the Kaweka course, which provides scholarships for 14 Hawke's Bay students each year to attend Outward Bound at Anakiwa in the Marlborough Sounds. The evening saw Hawke's Bay Foundation launch a new named fund that will ensure scholarships for students to attend this course, will continue for generations to come.

### **December:**

#### **Sally Lusk Fund**

The year finished with a very special new fund, set up in the memory of the late Sally Lusk. Our largest fund to date will enrich the lives of many more older people in Hawke's Bay in perpetuity. Sally's inimitable legacy in Hawke's Bay's aged care sector is now etched in history and will continue to inspire others.



*Walk Of Wonders shines bright on a wintry night, raising funds for Hawke's Bay's mental health services.*

## Live Here, Give Here

### **GIVE HERE:**

#### **Lusk Legacy Lives on in New Community Fund**

Aged care services around Hawke's Bay are set to benefit from the single largest donation ever gifted to Hawke's Bay Foundation, thanks to the vision and mission of one generous local.

The late Sally Lusk's legacy will live on with proceeds from the recent sale of a Havelock North property she bought to enrich the lives of the village's elderly, now being donated in perpetuity to Hawke's Bay Foundation.

The transfer of Sally's estate, (worth over \$1.3M) has launched the newly named Sally Lusk Fund, which, through the stewardship and expertise of Hawke's Bay Foundation, will help advance the delivery of aged care services in the region.

Hawke's Bay Foundation executive officer Amy Bowkett is delighted the new fund will continue Sally Lusk's original vision.

"Sally's mission was to encourage the senior population of Hawke's Bay to remain social and active. Donating a residence for these activities to take place was a wonderful example of selfless generosity. We are so pleased to continue Sally's legacy by working with the many worthy groups right here as she would have wanted."

The Lusk Centre took pride of place as a local landmark in Te Aute Road, Havelock North for 29 years. The residence was donated in 1992 by Sally Lusk from her financial resources. Sally's original vision was to create a place for elderly people who lived alone to gather and find companionship, share a cup of tea, enjoy entertainment and have somewhere to go.

Three years ago The Lusk Centre was renamed 'Sally's Place' when Enliven was appointed to manage the Centre's growing operations and membership. However, in July last year, the running of Sally's Place was deemed no longer viable and the decision was made to close.

While the bricks and mortar may be gone, A.F.B. Lusk Club Treasurer, Laura Bakker believes the new Sally Lusk Fund will have an enduring legacy in the region.

"We chose Hawke's Bay Foundation because we wanted to ensure the fund wouldn't be misused or whittled away, but rather protected and grown in perpetuity for the benefit of the whole of Hawke's Bay" says Laura.

"This way, the money will continue to produce an income forever for the benefit of the aged care sector, just as Sally would have wanted. There's longevity in that."

Sally's daughter Marilyn Lusk remembers her mother's vision, mission and now legacy.

"Mum's dream was for a social hub that would bring elderly people together and create a lively, welcoming place for them to enjoy. She certainly achieved that!

Marilyn continues "Speaking for my four other siblings - we are proud and happy that the money from the sale of the Club Home is to create a permanent fund."

Foundation executive officer Amy Bowkett adds named funds are increasing in popularity as people contemplate what sort of legacy they'd like to leave on the world.

"Families are increasingly looking around for causes close to their hearts that they can support. Unlike other charitable giving, a one-off donation made through Hawke's Bay Foundation grows and keeps on giving, forever. It's the smarter way to give" Amy says.



### **GIVE HERE:**

#### **Former Student Sets 'Giving Wheels' in Motion**

Karamu High School's new fund set up by a former student is spurring other alumni into 'giving back' and it's hoped its inception will start paving the way for other schools around Hawke's Bay to follow suit.

In a first of its kind for Hawke's Bay Foundation, Executive Officer Amy Bowkett was delighted to receive the phone call from the donor, who wishes to remain anonymous.

"We are very grateful to our donor for giving us the opportunity to support Karamu High School in



*Sally Lusk*

perpetuity. Our long term goal is that every school in the region has their own fund that can be supported by students and alumni. Having an endowment fund ensures the school will receive a guaranteed income annually, that will grow over time.”

The donor has been donating regularly to the school but wanting to make a more permanent gift felt compelled to recently set up their own fund to the tune of \$100,000 through Hawke’s Bay Foundation.

It’s planned the newly named Karamu High School Fund will be used for items such as sporting equipment, improving school facilities, learning materials, team activities and scholarships.

“My hope is that this Fund will be supported by other school alumni or current students, growing in value over the years to become a significant source of extra funds for the school. I certainly appreciated the start Karamu gave me in life.”

The Fund will provide financial support in perpetuity to Karamu High School for the benefit of its 900 plus students in their academic, cultural and sporting activities. As a permanent Fund, it now provides an annual donation to the school for items not funded by government grants.

Karamu Principal Dionne Thomas says the new asset for the school was completely unexpected.

“Having our own endowment fund at Hawke’s Bay Foundation is a remarkable gift from a treasured

Tira Ora (alumni of Karamu) that will be there forever to benefit the current students of Karamu High School.”

In an education environment where government funding can fluctuate from year to year, guaranteed incomes from funds set up through Hawke’s Bay Foundation offer a more strategic model of charitable giving.

Adds Amy, “establishing a school fund provides a school with a vehicle for alumni to give back, and contributes to financial stability and predictability in the long term”.

With one of the largest school rolls in Hawke’s Bay and a team of 70 staff, the Karamu High School Fund will have a far-reaching impact and since announcing its inception, Hawke’s Bay Foundation’s Amy Bowkett has seen a spike in interest from people wanting to donate.

“The day the story broke in the media I fielded a call from a local couple, both with ties to Karamu High School, who matched the original donation with a further \$100,000. I’ve no doubt we’ll see more benevolent locals coming forward, after all, charity begins at home.”

*If you, or someone you know would like to contribute to the Karamu High School Fund, head to Hawke’s Bay Foundation’s website: [www.hawkesbayfoundation.org.nz/why-would-i-give/our-funds](http://www.hawkesbayfoundation.org.nz/why-would-i-give/our-funds)*



*Dionne Thomas, Karamu High School Principal*



## Live Here, Give Here

### GIVE HERE:

#### Night Of Us Back for Another Year

2021 kickstarted for Hawke's Bay Foundation with a sold-out Night Of Us event seeing three magnificent methuselah wine bottles achieve more than \$50,000 at auction. The bottles claimed centrestage, combining premium wine from New Zealand's best winemakers



*The Night of Us organisers Hawke's Bay business owners Kim Thorp, left, and John (Mac) Macpherson with one of the auctioned methuselahs.*

with the work of three prestigious New Zealand artists: Dick Frizzell, Martin Poppelwell and Freeman White.

Event organisers Kim Thorp and John (Mac) Macpherson, who first envisioned a community fundraising event to benefit Hawke's Bay Foundation back in 2019, were overwhelmed with the response on the night.

"We were so delighted to see a room full of passionate, generous Hawke's Bay people come out in support of the event. They were there, of course, to enjoy an evening of top entertainment, food and wine. But they were also very keen to learn about the important work the Foundation does, distributing funds to charities and not-for-profits who work so hard within our Hawke's Bay community."

Winemaker Rod McDonald and Martin Poppelwell partnered to present a methuselah containing Syrah from the 2019 vintage. It achieved the top bid of the night at \$17,500.

"Helping Hawke's Bay Foundation reach new supporters, raise awareness within the community and add to their fund was the perfect outcome for us," said Rod. Martin added "I am proud to contribute to Hawke's Bay Foundation's endowment fund, a great local charitable foundation."

Hawke's Bay Foundation Trustee Jules Nowell-Usticke says the event was pivotal in explaining to the audience how the Foundation works – pooling community funds, never spending them, and distributing the annual income.

Now, the Night of Us team is already in the planning

stages for a 2022 event – the shape and timing of which is yet to be determined. "Like any first-time event, we've taken some learnings from our inaugural Night of Us and can't wait to bring back this wonderful concept next year," says Kim.

John 'Mac' says Hawke's Bay Foundation does exemplary work and needs more bequests, endowments and donations. "Giving through Hawke's Bay Foundation means your gift is being used right here in the region we love, but in order to keep doing good – reducing poverty statistics, empowering families and encouraging growth – it requires ongoing support."



### GIVE HERE:

#### New Wheels Drive in a Bright Direction

Being plugged in to Hawke's Bay's community needs has taken on a cleaner greener meaning for Hawke's Bay Foundation, with the organisation's first electric sponsored vehicle hitting the streets.

Generously donated by Bay European and sign-written by Sign Central, the Mitsubishi Outlander PHEV (plug-in, hybrid electric vehicle) heralds a move toward environmentally friendly commuting for Hawke's Bay Foundation. As a community foundation who each year funds local environmental projects and charities, it has been a steer in the right direction according to Chair, Giles Pearson.



“A smart mobile billboard will increase our visibility and add to the understanding that Hawke’s Bay Foundation is a proven and growing mechanism for donors to pull together to help Hawke’s Bay charities deliver for our community.”

Hawke’s Bay Foundation has been pooling local resources since 2012, using only the income generated off its centralised fund to distribute to local and approved charities. Last year over 177 thousand dollars was apportioned to help sustain the services of 53 local charities, without which many of whom would struggle to operate.

It is one of 17 foundations running in New Zealand under the respected Community Foundations of New Zealand umbrella.

“Like the car, Hawke’s Bay Foundation is created as a model designed for enduring impact. We are slowly gaining total trust in the community as an organisation that will deliver that. We know it will take time, but we’re really happy with progress. This is a marathon not a sprint,” says Giles.

For Bay European Director, Tim Murphy, supporting local has always been key.

“Hawkes Bay Foundation’s goals align with ours, with a focused strategy to reach more people and make a genuine difference. As the mantra goes, “Live Here, Give Here”, we are passionate about Hawke’s Bay and our commitment to Hawke’s Bay Foundation extends beyond the supply and running costs of an electric vehicle, our shareholders have also donated to the

Foundation, ensuring a long-term, lasting legacy.”

Taking the wheel of the PHEV, Foundation Executive Officer Amy Bowkett is enjoying being kinder on the planet and her pocket.

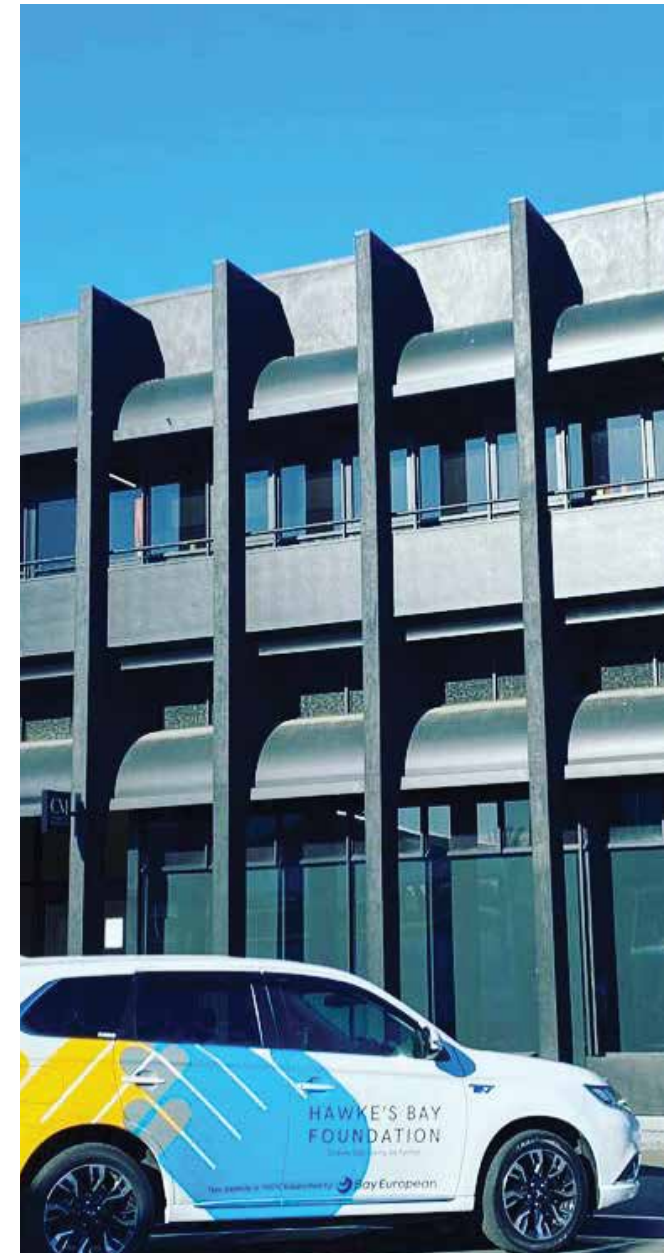
“In my role as Executive Officer for the Foundation, I’m out and about visiting our supporters, making presentations to local professional firms and community groups, and visiting the charities we fund. I can easily go through a tank of petrol a week. To be able to perform my role and know that I am now lessening the environmental impact on our region is a great feeling.”

“Hybrid and electric vehicles are clearly the way forward and I hope more organisations around Hawke’s Bay will follow suit. People are seeing our bright and colourful vehicle and we’ve seen an increase in people visiting our website as a result, where they discover the impactful work Hawke’s Bay Foundation is achieving in their community.”

*To find out more about the work of Hawke’s Bay Foundation and how you can ‘Make Your Giving Go Further’, head to [www.hawkesbayfoundation.org.nz](http://www.hawkesbayfoundation.org.nz)*



*Right: Hawke’s Bay Foundation’s new sign written hybrid electric vehicle donated by Bay European, outside our new office premises at 209 Queen Street, Hastings. Thanks to Hansen Property Group for their continued support.*



## Foundation Funding Proves a Lifeline to Local Charities

The coffers of 53 hard working local charities received a welcome boost with the injection of pivotal 2021 funding from Hawke's Bay Foundation.

Of the 78 charities that applied for financial assistance through Hawke's Bay Foundation, 53 were approved and received a collective total of over \$177,000 in 2021.

Hawke's Bay Foundation Distributions Committee Chair Sarah Mulcahy is pleased with the funding round's steady growth.

"As ever, we are very grateful to our donors who trust us to make the right decisions as to where the need is greatest. This is the culmination of a huge collective effort from our Distributions Committee whose wealth of knowledge in the charitable sector determines where the funding will go. We look forward to following up with our successful applicants next year to hear of their successes and challenges."

Not-for-profit charity organisations are historically the unsung heroes of any community, providing critical support in places government funding does not extend. Hawke's Bay is no exception where the work of Flaxmere based Wharariki Trust has been winning praise for helping whanau stay warmer, drier and safer through its Healthy Homes programme.

Wharariki Trust founder Ana Apatu says with the continued support of Hawke's Bay Foundation, critical



*Cancer Society shuttle driver John Davis has been transporting patients for four years, between Hawke's Bay and Palmerston North.*

repair work has been carried out on over 70 DHB referred houses in the past 12 months from Wairoa to Takapau.

"At times there are up to 15 family members living in one house" says Ana. "This has become more prevalent due to Covid-19 and the housing shortage. During our critical repair work we have our builder assess those repairs

categorized as: critical, urgent and non urgent. We have a capped amount of funding per house and make every dollar stretch as far as we can."

"We target homes where there are sick tamariki and are extremely grateful to Hawke's Bay Foundation for helping us achieve a healthier Hawke's Bay community."

Other areas of the community to benefit from Foundation funding this year include: Napier Family Centre's child and youth counselling programme, Barnardos' Napier children's contact service, the Cancer Society's three times a week shuttle bus service, Cranford Hospice's family support team, Te Mata Park Trust, CHB Parent's Centre and Hastings and Napier Riding for the Disabled.

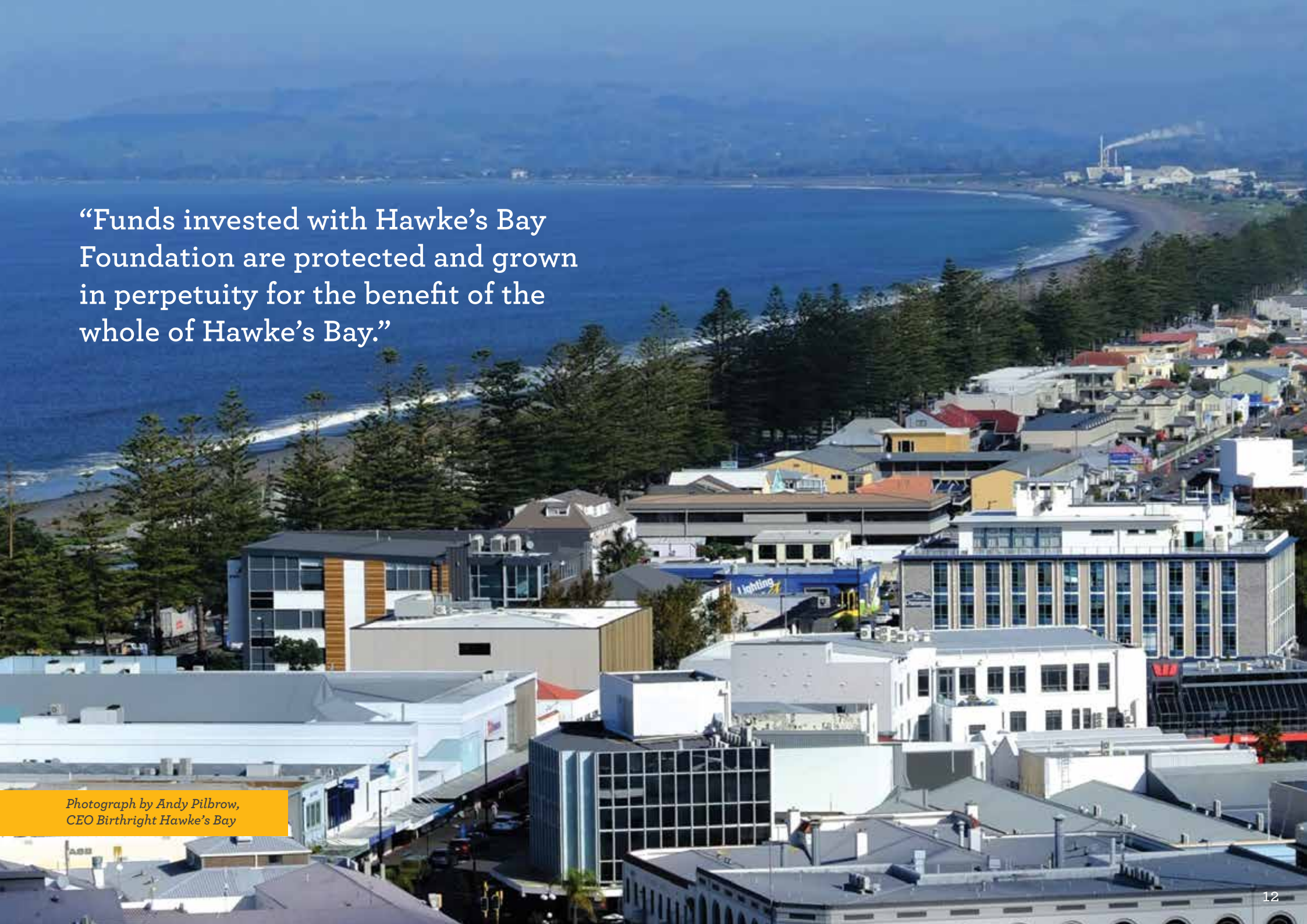
2021 Foundation funding was a welcome drop in the donation bucket for Cancer Society Hawke's Bay. The \$4,000 in funding will help keep the rubber on the road for the region's three times a week shuttle bus service to Palmerston North for cancer patients. In the last financial year, Cancer Society Hawke's Bay undertook 565 round trips to Palmerston North and covered 48,615 kilometres for cancer patients to receive critical radiotherapy and/or chemotherapy treatment.

Cancer Society's Sushmita Chakravarty says the continuation of the door-to-door free of charge service is very much dependent on the generous support of the community.

"Even during lockdown level 4, we were getting new referrals for cancer patients as cancer carries on - it doesn't stop just because there is a pandemic so our driving service continued. In the next few years the demand for the service will increase and we will be dependent on the support of our community and funders like Hawke's Bay Foundation for their all important donations."



Epic Ministries students attend Junior Youth Week in Central Hawke's Bay.



“Funds invested with Hawke’s Bay Foundation are protected and grown in perpetuity for the benefit of the whole of Hawke’s Bay.”

*Photograph by Andy Pilbrow,  
CEO Birthright Hawke’s Bay*

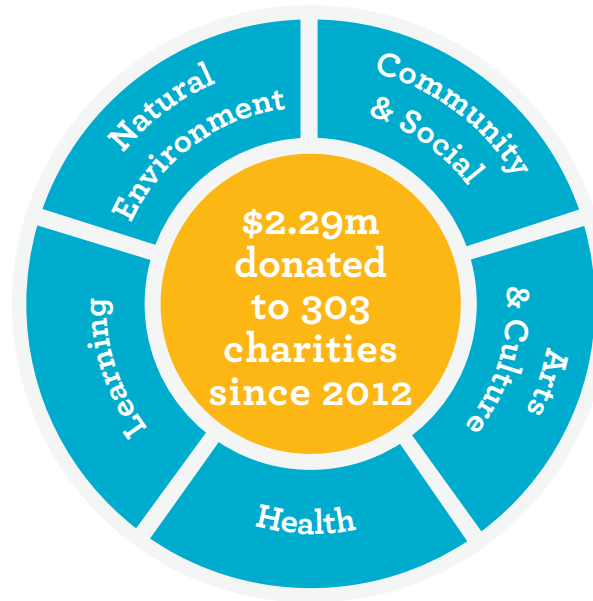
## Statement of Performance

Hawke's Bay Foundation	2021
Net assets (as at 1 Jan 2021)	\$4,528,886.00
Donations received (incl pass through)	\$2,228,426.00
Total distributions made (incl pass through)	\$464,283.00
Return on invested funds	5.10%
Net assets (as at 31 Dec 2021)	\$6,530,177.00

Hawke's Bay Foundation uses 1% of the endowment fund for operational costs with the balance of operations funding derived from donations and sponsorship. All funds were invested in compliance with our SIPO which can be viewed on our website.

Hawke's Bay Foundation's central endowment fund has posted a record 57% increase in growth over the last financial year, its single biggest jump in growth since launching ten years ago.

The record rise follows a year of increased community support and the transfer in December 2021 of the AFB Lusk Club Home Trust valued at over \$1.3M. As a result, Hawke's Bay Foundation's central fund has risen to \$6.07M, (as at Dec 31, 2021).



Donations of this magnitude demonstrate significant trust by the community in the Foundation, its processes, people and the endowment model of giving back to the community every year.

Since its inception in 2012, Hawke's Bay Foundation has received more than \$5.1M in capital donations and distributed over \$1.3M to approved Hawke's Bay charities and causes. These donations are making a significant impact in the sustainability of essential charities and services in our community.

## Look how far we've come since 2012



## Distributions

The need for a strong not-for-profit sector has never been more apparent than in 2021. Fundraising efforts in the charity sector have been seriously limited due to the long-term impact of Covid-19, and organisations supported by the Hawke's Bay Foundation are working hard to not only deliver services to the people they serve but also to sustain themselves into an uncertain future. It has been a perfect storm for some organisations and funders

such as the Hawke's Bay Foundation have been more important than ever.

Our distribution committee in 2021 was fortunate to be able to distribute \$177,000 in funding to 53 local recipient organisations. This distribution of funds was only made possible through the generosity of Hawke's Bay Foundation donors and supporters.

Making good funding decisions has always been a priority for Hawke's Bay Foundation and the diligent work of our volunteer distributions committee has again been evident in 2021. There is never enough funding

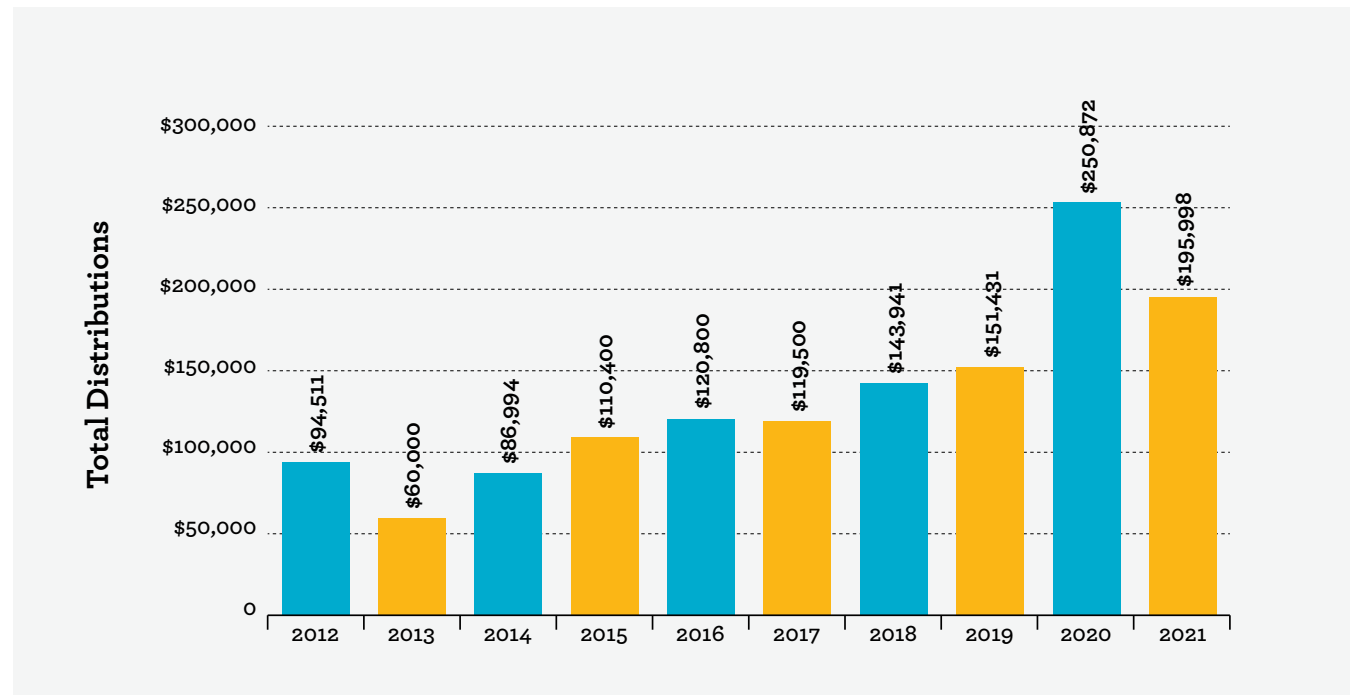
to meet the needs of the organisations we support but as Hawke's Bay Foundation funds under management continue to grow, so does our ability to support our community into the future.

The organisations we support are making a difference in our community every day. They are full of unsung heroes doing critical work who are driven to make our community a better place for everyone. To our 53 recipient organisations, we extend a heartfelt thank you - our debt of gratitude for your work continues to grow.



**Sarah Mulcahy**  
Chair, Distributions Committee

### Hawke's Bay Foundation Distributions 2012-2021



## 2021 Grant Recipients

Hawke's Bay Foundation & The Tindall Foundation Grants	Grant
Family Works HB <sup>HBF</sup>	5000
Birthright Child and Family Trust <sup>T</sup>	8000
Napier Family Centre <sup>T</sup>	8000
Wharariki (Flax) Trust <sup>T</sup>	8000
Heretaunga Women's Centre <sup>T</sup>	5000
Barnardos NZ <sup>T</sup>	8000
Citizens Advice Bureau Napier <sup>T</sup>	6000
Royal NZ Plunket Trust <sup>HBF</sup>	3000
Whatever It Takes Trust Inc. <sup>HBF</sup>	5000
NZ Council of Victims Support Groups <sup>HBF</sup>	4000
Big Brothers Big Sisters <sup>T</sup>	6000
Cancer Society HB <sup>HBF</sup>	4000
The Cranford Hospice Trust <sup>HBF</sup>	7067.17
Age Concern Napier <sup>HBF</sup>	2000
Dementia Hawke's Bay <sup>HBF</sup>	2000
English Language Partners <sup>HBF</sup>	2000
CHB Parents Centre <sup>HBF</sup>	2874
Nourished for Nil Ltd. <sup>HBF</sup>	5000
Kenzie's Gift Trust <sup>HBF</sup>	1000
Hastings Citizen's Advice Bureau Inc. <sup>T</sup>	4000
Prima Volta Charitable Trust <sup>HBF</sup>	3500
Leg Up Trust <sup>HBF</sup>	4000
Arts Inc. Heretaunga Inc. <sup>HBF</sup>	2500
Anxiety New Zealand Trust <sup>HBF</sup>	2000
Epic Ministries Inc. <sup>HBF</sup>	4000
Parenting Place Charitable Trust <sup>T</sup>	4000

## Connecting generous people that care with causes that matter

Hawke's Bay Foundation & The Tindall Foundation Grants	Grant
Age Concern Hawke's Bay <sup>HBF</sup>	3000
Brain Injury Association HB <sup>HBF</sup>	2000
Radio Kidnappers Trust <sup>HBF</sup>	1000
Raukatauri Music Therapy Trust <sup>HBF</sup>	4000
CONNECT Youth and Community Development <sup>HBF</sup>	3212
Paul Hunter Centre <sup>HBF</sup>	3000
Cystic Fibrosis of NZ <sup>HBF</sup>	1500
Napier Group RDA <sup>HBF</sup>	2000
Hastings Art and Culture Trust <sup>HBF</sup>	1500
Christian Lovelink Napier Hastings <sup>T, HBF</sup>	2000
Te Mata Park Trust <sup>HBF</sup>	1000
Takapau Community Health Centre <sup>HBF</sup>	3500
Creative Arts Napier Inc. <sup>HBF</sup>	1411.66
Nat Foundation for Deaf and Hard of Hearing <sup>HBF</sup>	1000
Hawke's Bay Youth Trust <sup>HBF</sup>	3500
Sweet Louise <sup>HBF</sup>	1000
Lifelink/Samaritans Inc. <sup>HBF</sup>	2000
Thermals For Children <sup>HBF</sup>	1000
Environmental Education for Resource <sup>HBF</sup>	1148.18
Hayseed Trust <sup>HBF</sup>	3000
Graeme Dingle Foundation <sup>T</sup>	3000
Hastings RDA <sup>HBF</sup>	2000
Inspire in Education <sup>T</sup>	3000
Autism NZ Inc. <sup>HBF</sup>	1000
Parkinsons Charitable Trust <sup>HBF</sup>	1000

<sup>T</sup> denotes distributions made from The Tindall Foundation <sup>HBF</sup> Hawke's Bay Foundation



The Outward Bound Fund at Hawke's Bay Foundation helps scale 14 local students to new personal heights, each year.

**“Everyone wants to live on top of the mountain, but all the happiness and growth occurs while you’re climbing it.”**

- *Giles Pearson,  
Hawke's Bay Foundation Chair*



## Partners & Supporters

As a community foundation we strive to keep our costs as low as possible to ensure 99% of the income from gifted funds is invested back into our community. We are incredibly grateful to the following organisations who have supported us to keep our operating and marketing costs to a minimum. We also want to thank all of the individuals who have given their time or expertise to assist with one-off events or promotions.

Hawke's Bay Foundation is proudly supported by:



## Community Foundations of New Zealand (CFNZ)



Hawke's Bay Foundation is proud to be a member of Community Foundations of New Zealand (CFNZ). Membership of CFNZ means that our community foundation meets professional standards of best practice. We are community focussed and governed by a local board who continually strive to build a permanent endowment that will benefit our local community. We're proud to be part of a network of community foundations that have been growing around Aotearoa New Zealand since 2003.

## The Tindall Foundation (TTF)



Hawke's Bay Foundation is proud to be the local funding manager for The Tindall Foundation (TTF). This unique funding model sees regional funding managers throughout New Zealand give out local donations on behalf of TTF. Applications received in our annual funding round are evaluated against TTF criteria and we work closely with them to ensure grants are awarded in line with their key programme areas. In 2020, we awarded grants totalling \$88,000 to 22 organisations on behalf of the Tindall Foundation.

## Our Team

### Board of Trustees



Giles Pearson (Chair)



Jessica O'Sullivan



Sarah Mulcahy



Jules Nowell-Usticke



Kevin Callinicos



Sam Howard



Craig Hay



Cam McLeay

### Board Update

Hawke's Bay Foundation Board consists of eight trustees, all of whom bring a great deal of knowledge and experience from various sectors of the community.

Four of our trustees are nominated by leaders in the Hawke's Bay community, including one nominated jointly by the mayors of Hastings and Napier; one by the Hawke's Bay Law Society; one by Chartered Accountants Australia and New Zealand and another by the Hawke's Bay Chamber of Commerce.

### Committees

#### Finance Committee

Giles Pearson (Chair of Finance)  
Bev Penny

#### Investment Committee

Sam Howard (Chair of Investments)  
Henry Pennington (Community representative)  
Neil Martin (Community representative)  
Giles Pearson  
Michael Chamberlain (Consultant)

#### Distributions Committee

Sarah Mulcahy (Chair of Distributions)  
Gwyn John (Community representative)  
Craig Hay  
Jules Nowell-Usticke  
Trish Giddens (Community representative)

#### Marketing Committee

Jess O'Sullivan (Chair of Marketing)  
Jules Nowell-Usticke  
Craig Hay  
Cam McLeay  
Alisha Neilson

#### Staff

Amy Bowkett (Executive Officer)  
Alison Harper (Administration and Distributions Officer)  
Bev Penny (Finance Officer)  
Alisha Neilson (Marketing and Communications Officer)



**“Giving is not just about  
making a donation,  
it is about making  
a difference.”**

*Kathy Calvin  
CEO & President of the  
United Nations Foundation*

**Our community.**

**Our responsibility.**

**Our future.**



**HAWKE'S BAY  
FOUNDATION**

**06 870 4648**

info@hawkesbayfoundation.org.nz  
facebook.com/HawkesBayFoundation

[www.hawkesbayfoundation.org.nz](http://www.hawkesbayfoundation.org.nz)